

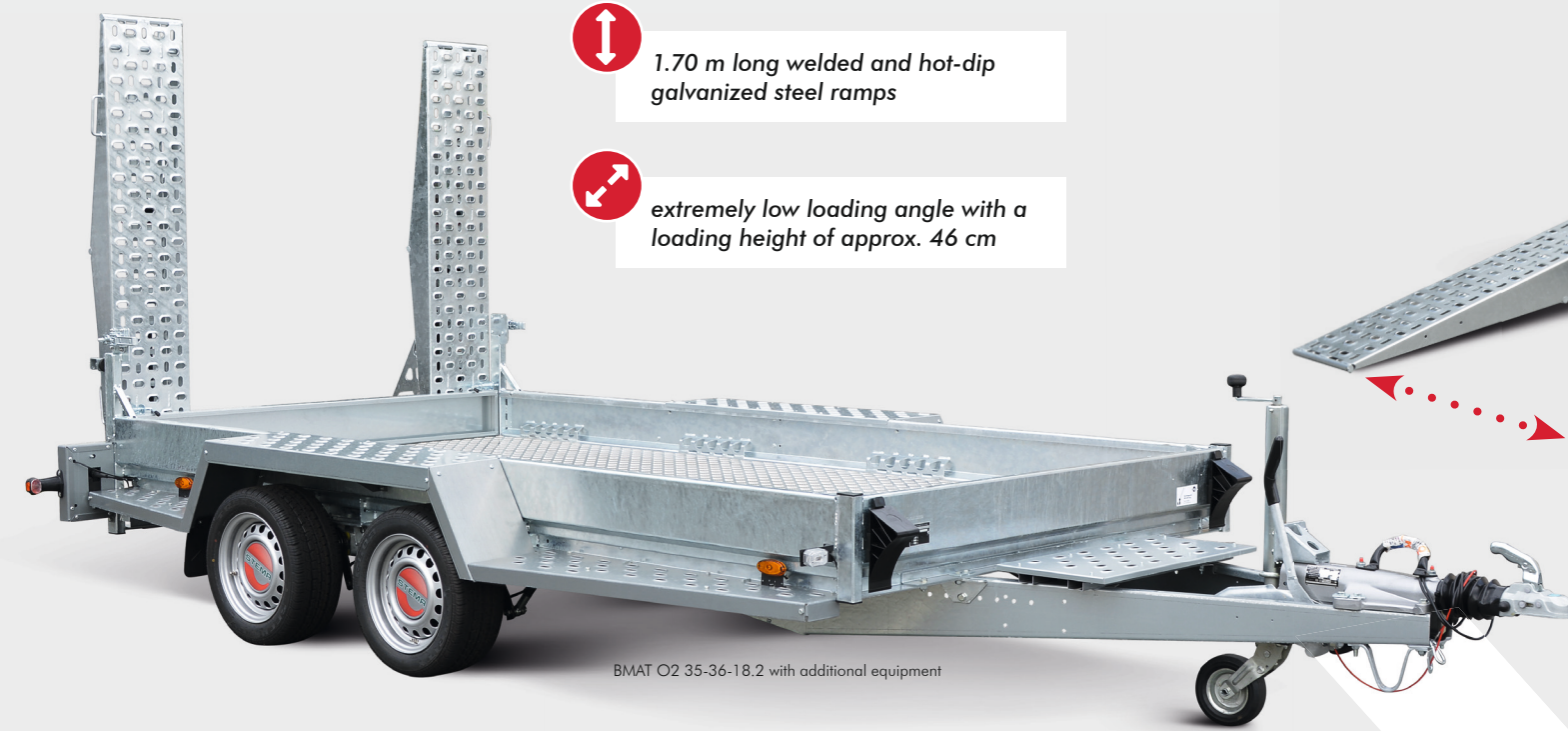


Der Anhänger

Fast loading.

The extra-wide ramps made of steel are sturdy, non-slip, fold-up and can be individually pushed across the loading width and thus adapt to any track width (adjustable from 1 to 100 cm).

- 1.70 m long welded and hot-dip galvanized steel ramps
- extremely low loading angle with a loading height of approx. 46 cm



BMAT O2 35-36-18.2 with additional equipment



BMAT O2 35-36-18.2

Steel ramps set	
Dimensions	170 x 30 cm
Carrying capacity	max. 2.8 t per pair
Weight	34 kg per ramp
Ramp angle	ca. 18°

The construction transporter for every transport of up to 2,8 t heavy construction machinery and excavators.



Pictures are classic examples and partly contain accessories.

STANDARD EQUIPMENT

- ✓ tandem low loader optionally with STEMA V-drawbar or central pipe*
- ✓ welded and hot-dip galvanized in chassis with solid steel bridge
- ✓ front and side panels made of 3 mm thick, welded black plate, hot-dip galvanized
- ✓ 20 cm high welded platform sides
- ✓ continuous screen printing of wooden floor (18 mm thick), additional with aluminum plate (3 mm thick)*
- ✓ walk-on sheet steel fenders for easy mounting and dismantling
- ✓ 2 longitudinal beams for optimum weight distribution
- ✓ 8 retractable in the frame DIN lashing points; Load: per 1000 daN (kg), DIN EN 12640 *
- ✓ 2 steel ramps, to the side moveable (1-100 cm), with additional gas spring as a lifting aid and triangle rear reflector
- ✓ 1 stable support per ramp
- ✓ shock absorbers and overrun brake
- ✓ heavy duty automatic support wheel
- ✓ professional brand lighting Earpoint IV with reversing lamp
- ✓ outline lights for more safety
- ✓ 13-pin plug (EG-Ausstattung)
- ✓ 2 chock blocks with holders
- ✓ tyres 195/50 R13C

* depending on model

STRONG SHELL. STRONG CORE.

For any usage.

The STEMA construction trailer has taken another development boost in terms of comfort and stability. With its massive construction of welded and hot-dip galvanized chassis system and the additional aluminum plate, it is a reliable guarantor in daily construction site use.

Fast and safe.

With the large stable and welded lashing profile your goods can be secured quickly and optimally. Depending on the model, up to four lashing profiles per side and four welded lashing points are integrated into each frame corner.

Safe control.

Even while driving, the ramps are optimally secured. The additional locking device makes it easy to lock the steel ramp and ensures goods-safe and virtually noiseless transport.

Slip- and walk-over resistant.

The two long sides of the BAUMA® are equipped with walk-on steel fenders. The tread profile with hole reduces the risk of slipping and a bottom mounted plate serves as a splash guard. Optional additional foot plates can be fitted front and rear.

internal dimensions L x W (cm)	equipment with	gross vehicle weight (kg)	payload (kg)	external dimensions L x W x H (cm)	rim diameter (cm)	brake/ jockey wheel/ shock absorbers	model	article number
301 x 140	V-drawbar	2500	1901	499 x 202 x 46	33.02 (13")	●/●/●	BMAT O2 25-30-14.2	24944.110
	V-drawbar	2700	2101	499 x 202 x 46	33.02 (13")	●/●/●	BMAT O2 27-30-14.2	24946.110
301 x 165	V-drawbar	3500	2800	499 x 227 x 46	33.02 (13")	●/●/●	BMAT O2 35-30-17.2	24950.110
	central pipe	3500	2750	565 x 227 x 46	33.02 (13")	●/●/●	BMAT O2 35-30-17.2	24951.110
360 x 180 *	V-drawbar	3500	2693	552 x 243 x 46	33.02 (13")	●/●/●	BMAT O2 35-36-18.2	24919.110
	central pipe	3500	2579	612 x 243 x 46	33.02 (13")	●/●/●	BMAT O2 35-36-18.2	24941.110

* with 3 active side marker lights per side; Lashing system made of sturdy and folded perforated plate; 4 additional lashing points in each frame corner
 A H = loading height (height of platform's upper edge)
 B with shock absorbers

STEMA reserves the right to change any specifications. Measures and weight are approximations. Products are subject to continuous technical changes.



steel ramps with integrated support



solid lashing profile for more safety



easy-to-use ramps locking



antislip sheet steel fenders

ACCESSORIES (optional)

- 1 insertable rear panel made of zinc
 - 2 excavator bucket plate (only possible for V-drawbar)
 - 3 tread with perforated sections designed for front & rear
- winch stand with 12.5 m long cable
 - aluminum checker plate instead of the wooden floor
 - anti-theft protection - Safety Box XL



COMFORTABLE AND FLEXIBLE.

The BAUMA® can be adapted for different coupling height. The continuously adjustable overrun device (central pipe) for truck tractors is optionally available with **ball head coupling (a)** or **DIN-towing eye (b)** as an accessory.

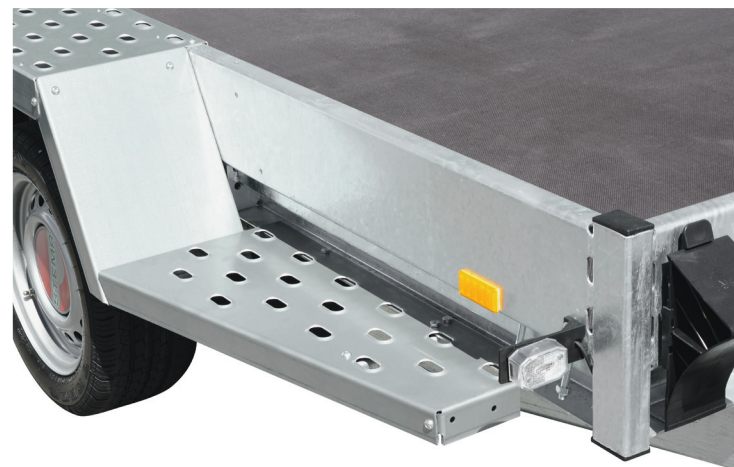


WOODEN FLOOR
standard equipment

**ALUMINUM PLATE
INSTEAD OF THE WOODEN FLOOR**
additional equipment



Pictures are classic examples and partly contain accessories.



tread with perforated sections designed for front and rear (additional equipment)



excavator bucket plate & winch stand with 12.5 m long cable (additional equipment)

ORIGINAL STEMA ACCESSORIES.



For more STEMA accessories please look at the online shop: www.stema.de



shock absorbers



The **construction trailer** are include shock absorbers (standard equipment). These trailers can be directly registered at the **registration office for 100 km/h**. There will be no extra costs and ways to the technical service (eg TÜV, DEKRA).



DIN-towing eye



wheel caps (2 pcs.)



spare wheel



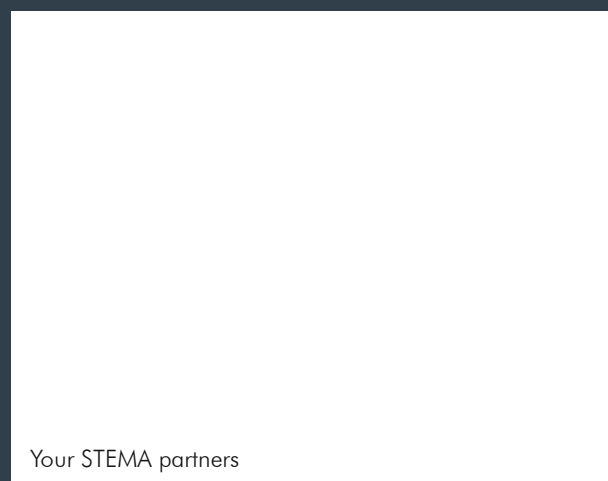
soft dock



anti-theft protection



fastening belt kit



Your STEMA partners

STEMA Metalleichtbau GmbH

Rieser Straße 50
01558 Großenhain

www.stema.de
info@stema.de

Phone +49 (0) 3522 30 94 0

STEMA reserves errors and changes. Measures and weights are approximations. Pictures are classic examples and partly contain accessories. Products are subject to continuous technical changes. No liability accepted for printing errors.



version: 12/2018 circulation: 500 pieces article number: WA002036



Der Anhänger

it's working ●



BAUMA®

Construction Transporter